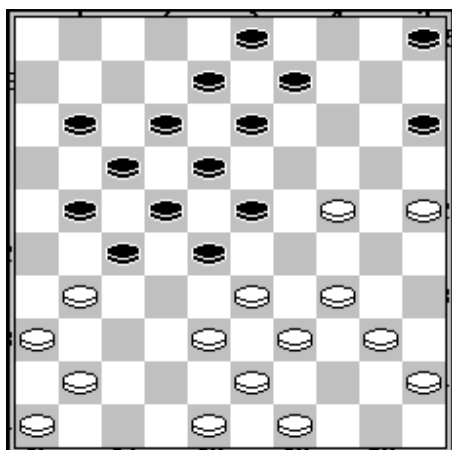


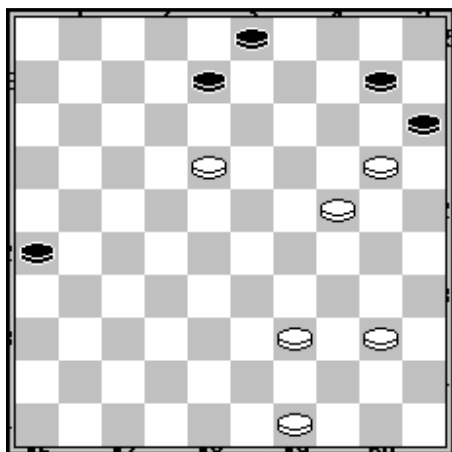
**(1) BADER Jürgen - THINEY Dominique**

LRNP Equ D1R2, 25-10-2014

1.33-29 18-22 2.38-33 12-18 3.42-38 7-12 4.47-42 1-7 5.32-28 19-23 6.28x19  
14x23 7.31-26 16-21 8.37-31 21-27 9.29-24 20x29 10.33x24 23-28 11.38-33 10-14  
12.42-38 13-19 13.24x13 8x19 14.35-30 9-13 15.40-35 19-23 16.44-40 2-8 17.30-  
24 4-9 18.34-30 14-19 19.30-25 19x30 20.35x24 17-21 21.26x17 12x21 22.40-34 7-  
12 23.50-44 11-17 24.44-40 6-11 25.40-35 11-16 26.31-26 27-32 27.38x27 21x32  
28.41-37 32x41 29.46x37 9-14 30.37-31 17-21 31.26x17 12x21 32.31-26 14-19  
33.26x17 19x30 34.35x24 22x11 35.33x22 18x27 36.43-38 23-28 37.48-42 11-17  
38.38-33 17-22 39.45-40 16-21 40.42-38 21-26 41.25-20 5-10 42.38-32 27x29  
43.34x32 13-18 44.32-27 22x31 45.36x27 18-22 46.27x18 8-13 47.18x9 3x25 1-1



25. 40-35, meilleur état 34-29 23x34 40x29 avec  
une pression sur le pion 28



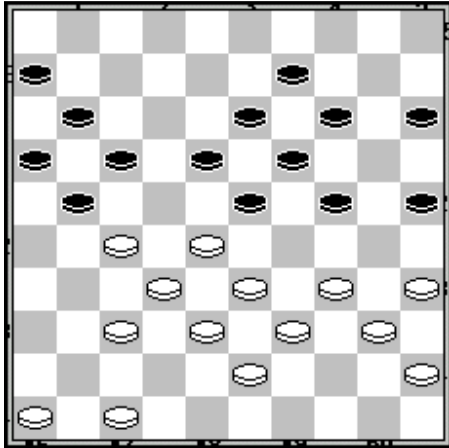
8-13? 26-31 gagnait

**(2) FONTIER Gérard - MANGANO Laurent**

LRNP Equ D1R2, 25-10-2014

1.34-30 20-25 2.30-24 19x30 3.35x24 18-22 4.33-29 13-19 5.24x13 8x19 6.40-34  
12-18 7.45-40 7-12 8.50-45 9-13 9.32-27 2-8 10.37-32 14-20 11.38-33 19-23  
12.31-26 22x31 13.26x37 1-7 14.32-28 23x32 15.37x28 4-9 16.41-37 10-14 17.43-  
38 20-24 18.29x20 15x24 19.48-43 5-10 20.40-35 14-19 21.44-40 10-15 22.37-32  
18-23 23.42-37 17-22 24.28x17 12x21 25.36-31 8-12 26.31-27 12-18 27.33-28 11-  
17 28.38-33 7-11 29.43-38 9-14 30.49-43 3-9 31.46-41 14-20 32.34-30 25x34

33.39x30 20-25 34.47-42 25x34 35.40x20 15x24 36.35-30 24x35 37.33-29 23x34  
 38.28-22 17x28 39.32x3 21x32 40.37x28 35-40 41.41-36 40-44 42.3-17 11x33  
 43.38x49 16-21 44.42-38 21-26 45.45-40 6-11 46.40-34 18-23 47.38-32 11-17  
 48.43-38 13-18 49.38-33 18-22 50.32-27 22x31 51.36x27 17-21 52.27x16 26-31  
 53.16-11 31-37 54.11-7 37-42 55.34-30 42-48 56.30-25 1-1



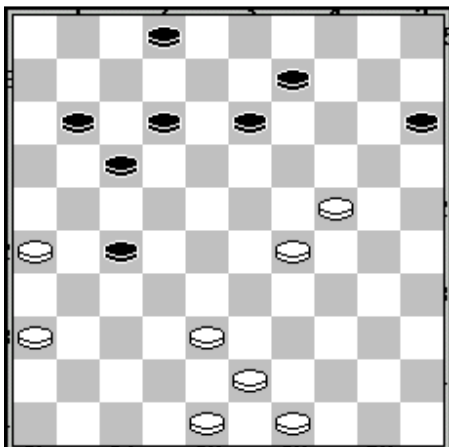
31.46-41 meilleur 34-30 25x34 40x20 15x24 48-42 et maintenant

les Noirs doivent donner 1 pion

**(3) BANNERY Jean Pierre - CARTON Mickaël**

LRNP Equ D1R2, 25-10-2014

1.33-28 16-21 2.31-26 11-16 3.37-31 7-11 4.41-37 1-7 5.39-33 19-23 6.28x19  
 14x23 7.33-28 9-14 8.28x19 14x23 9.44-39 10-14 10.50-44 5-10 11.46-41 21-27  
 12.31x22 18x27 13.32x21 16x27 14.35-30 14-19 15.30-25 10-14 16.34-29 23x34  
 17.40x29 4-9 18.29-24 19x30 19.25x34 14-19 20.37-31 17-22 21.41-37 19-23  
 22.37-32 11-16 23.32x21 16x27 24.34-30 7-11 25.38-33 11-17 26.42-38 23-28  
 27.30-24 20x29 28.33x24 9-14 29.44-40 6-11 30.40-34 13-18 31.34-29 8-13 32.45-  
 40 28-33 33.39x28 22x42 34.31x22 18x27 35.47x38 14-19 36.40-35 19x30 37.35x24  
 3-9 38.49-44 9-14 39.44-40 12-18 40.43-39 17-22 41.39-33 11-17 42.38-32 27x38  
 43.33x42 22-27 44.42-38 17-22 45.38-33 2-7 46.48-42 7-12 47.42-38 12-17 48.40-  
 34 14-20 49.34-30 20-25 50.26-21 25x23 51.21x32 0-2



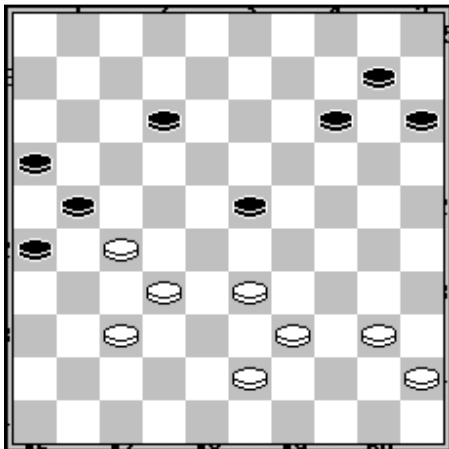
38. 49-44 , meilleur 38-33 pour pionner le pion 15 et si les N

jouent 09-14 , les B prennent le centre par 29-23

**(1) PLAISANT Jean Maurice - LEMAIRE Jacques**

LrNP Equ D1R2, 25-10-2014

1.33-29 17-21 2.39-33 20-25 3.31-26 11-17 4.44-39 18-22 5.37-31 6-11 6.32-28  
1-6 7.50-44 14-20 8.41-37 19-24 9.37-32 10-14 10.31-27 22x31 11.26x37 5-10  
12.46-41 21-26 13.36-31 13-18 14.41-36 9-13 15.47-41 3-9 16.31-27 17-22  
17.28x17 11x31 18.36x27 14-19 19.41-36 9-14 20.32-28 4-9 21.27-22 18x27 22.28-  
23 19x28 23.33x31 24x33 24.39x28 12-17 25.38-32 13-18 26.31-27 7-12 27.43-38  
8-13 28.49-43 17-21 29.44-39 2-8 30.39-33 6-11 31.43-39 18-23 32.28x19 13x24  
33.33-28 24-29 34.34x23 25-30 35.35x24 20x18 36.38-33 18-23 37.28x19 14x23  
38.42-38 9-14 39.27-22 12-17 40.48-43 17x28 41.33x22 11-17 42.22x11 16x7  
43.36-31 7-11 44.31-27 11-16 45.38-33 8-12 46.43-38 15-20 47.37-31 26x28  
48.33x22 21x34 49.40x7 16-21 50.7-1 21-26 51.1-23 26-31 52.22-17 20-24 53.17-  
12 24-29 54.23x34 31-37 55.12-8 37-41 56.8-2 14-19 57.2x24 41-46 1-1



Le coup par 37-31 ,33x22, 21x32 , 43-38, 40x07 ne semble pas gagner non plus, meilleur semble de poursuivre par 40-34 et de continuer d' augmenter l'avantage positionnel